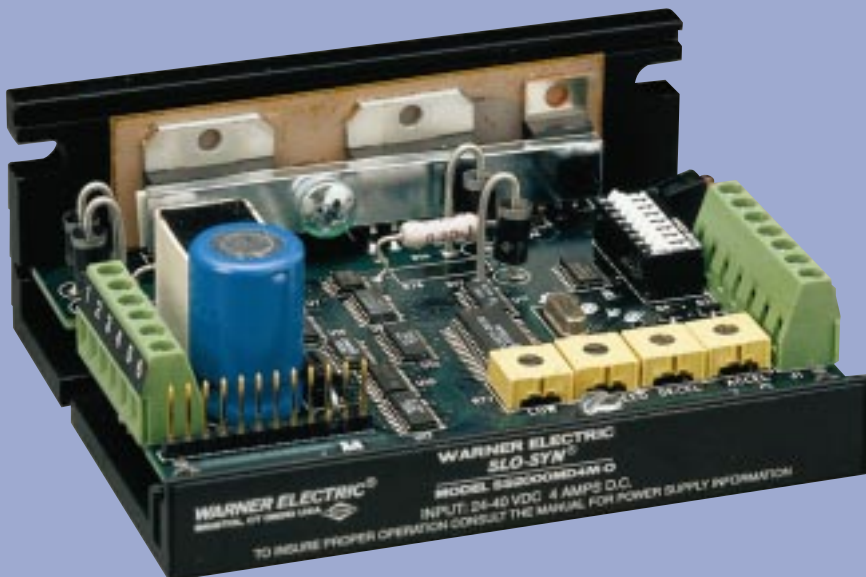


SLO-SYN[®]

Microstepping Drive with Oscillator and Analog Voltage Follower Combined in One Compact Unit

Model SS2000MD4M-O



WARNER ELECTRIC[®]



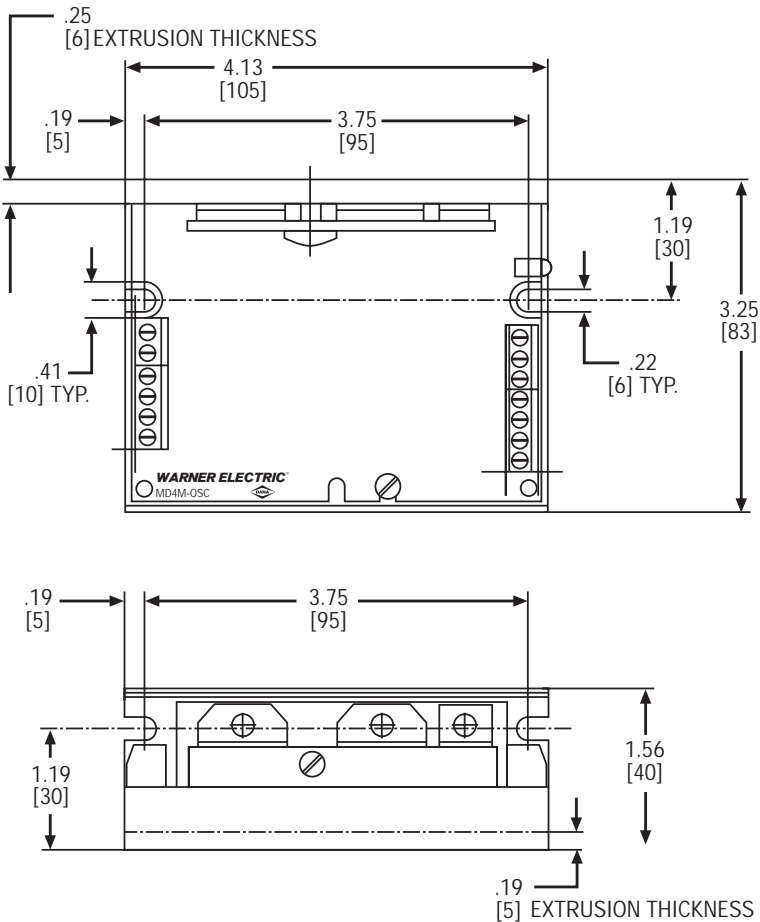
Features:

- ◆ *Micro-stepping Drive and Oscillator in one compact unit*
- ◆ *Microprocessor-based Digital Oscillator for accurate speed control*
- ◆ *Switch selectable motor current levels of 1.0 through 3.5 amperes*
- ◆ *Motor speeds up to 3000 RPM*
- ◆ *Built-in potentiometers for acceleration, deceleration, low speed, and run speed*
- ◆ *Full short circuit protection (phase-to-phase and phase-to-ground)*
- ◆ *Under-voltage and transient over-voltage protection*
- ◆ *Efficient thermal design*
- ◆ *Winding off capability*
- ◆ *User selectable automatic current reduction at standstill*
- ◆ *Run speed control from built-in potentiometer or external voltage input*

Compatible SLO-SYN[®] DC Step Motors Hybrid and High-Torque Series

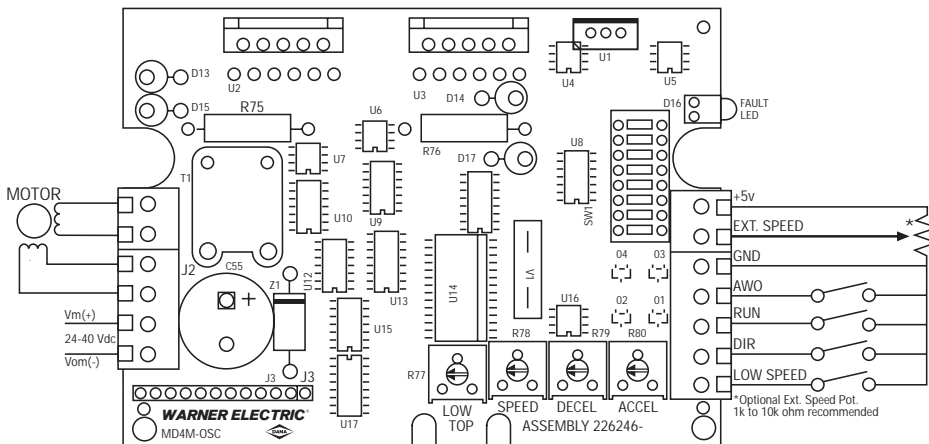


Dimensions



DIMENSIONS IN BRACKETS ARE IN MILLIMETERS

Wiring



Warner Electric Motors and Controls Division

Distributed by ELECTRO SALES CO., INC.

Sales: 617-666-0500

Fax: 1-617-628-2800

Web Site: www.electrosales.com/warner

Specifications

Mechanical

Size

(inches) 1.56 H X 4.13 W X 3.25 D

(mm) 40 H X 105 W X 83 D

Weight 10.3 ounces (292 grams)

Electrical

DC Power Supply Unregulated

Voltage 24 - 40Vdc

DC Power Supply Current 4.0A max.

Motor Current 3.5A max.

Drive / Oscillator Power Dissipation

(Worst Case) 35 watts

Environmental

Temperature

Operating +32° F to +122° F
(0° C to +50° C) free air ambient,
Natural Convection

Storage -40° F to +167° F
(-40° C to +75° C)

Humidity 95% max. noncondensing

Altitude 10,000 feet (3048 m) max.

Motor Compatibility

Motor Types Warner SLO-SYN M
and KM Series

M Series Frame Sizes M061
(NEMA 23D) through M092
(NEMA 34)

KM Series Frame Sizes ... KML060
(NEMA 23) through KML092
(NEMA 34)

Number of Connections 4, 6, 8

Minimum Inductance 0.5 millihenry

Maximum Resistance = 0.25 x
Vdc Supply / I Setting

Example:

Vdc = 30 I Setting = 3.5

R max. = 0.25 x 30 ÷ 3.5 = 2.1 ohms

**Note: Maximum resistance is total
of motor plus cable.**

Model Number

SS2000MD4M-0

Power Supply

30VDC 222705-001

WARNER ELECTRIC®

